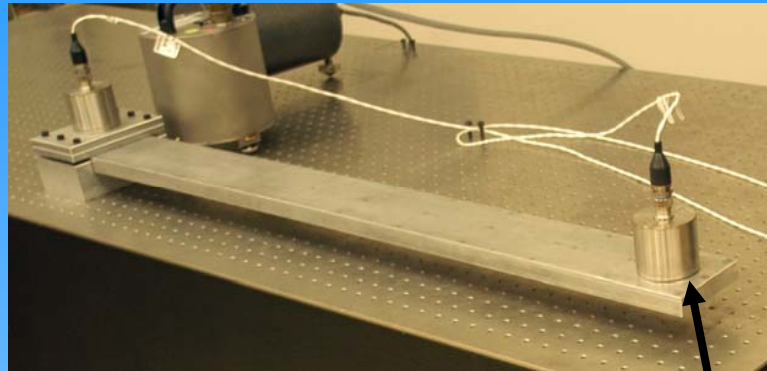
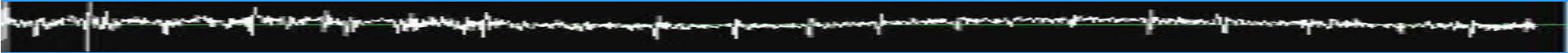


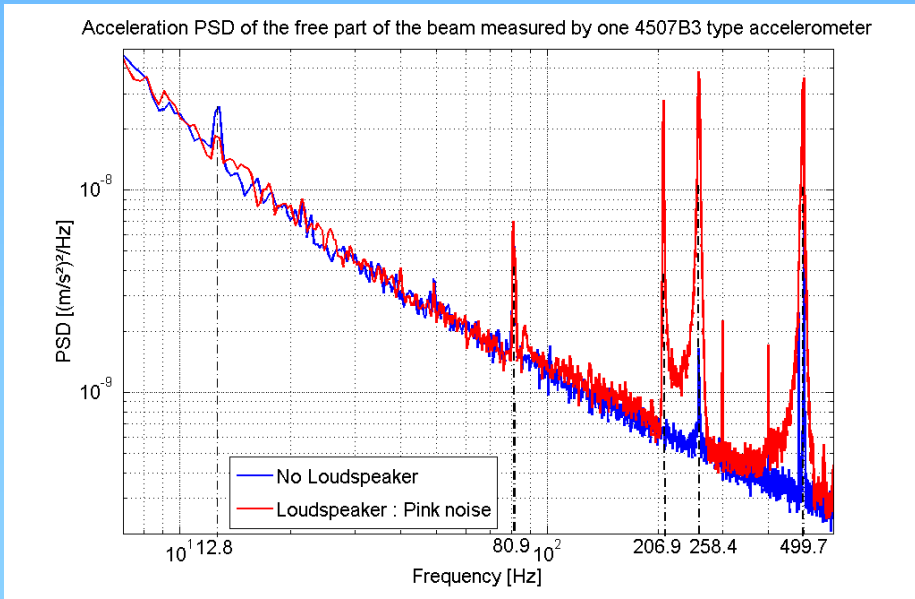


LAViSta



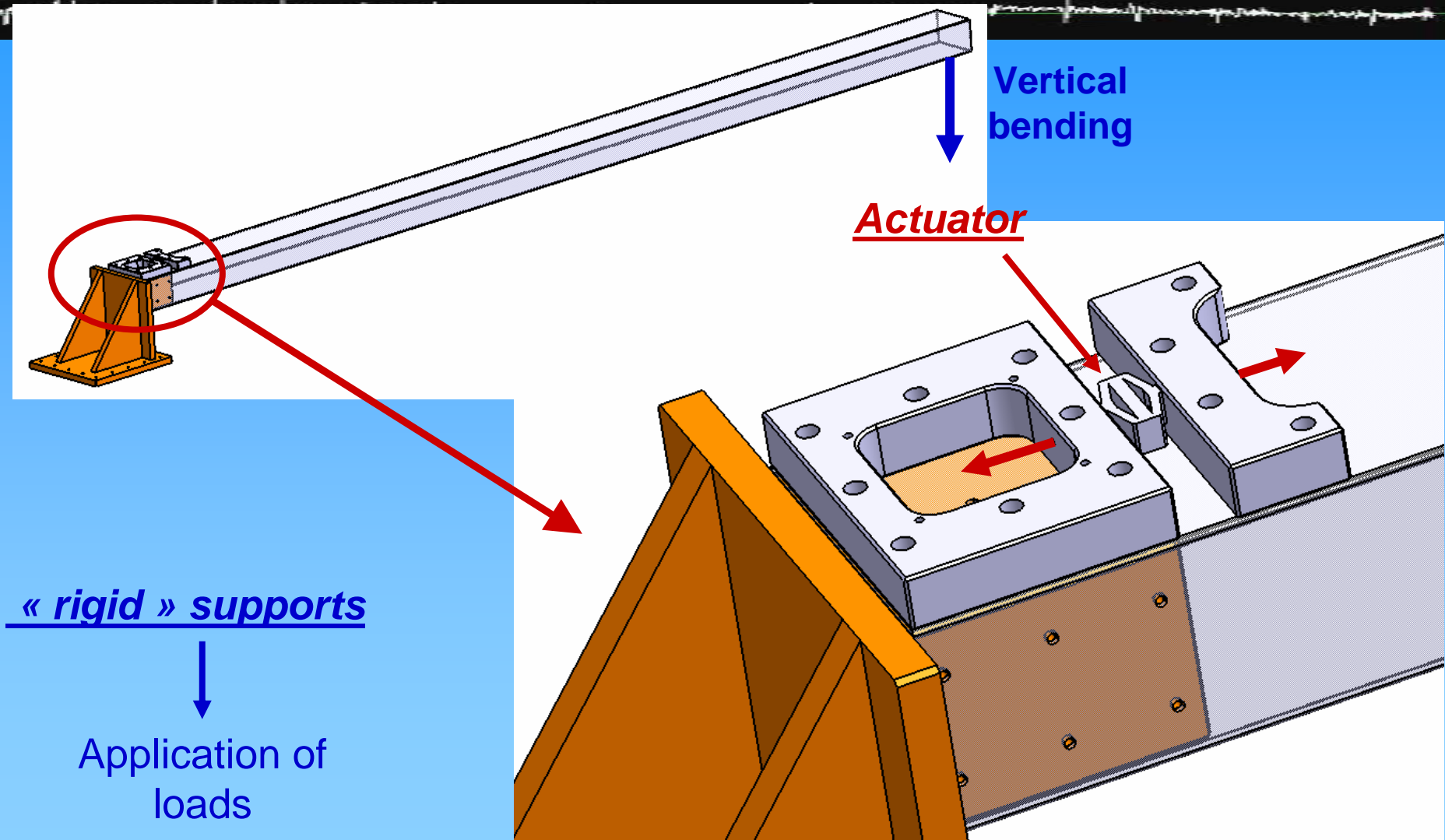
generation of pink noise with loudspeaker

Free end



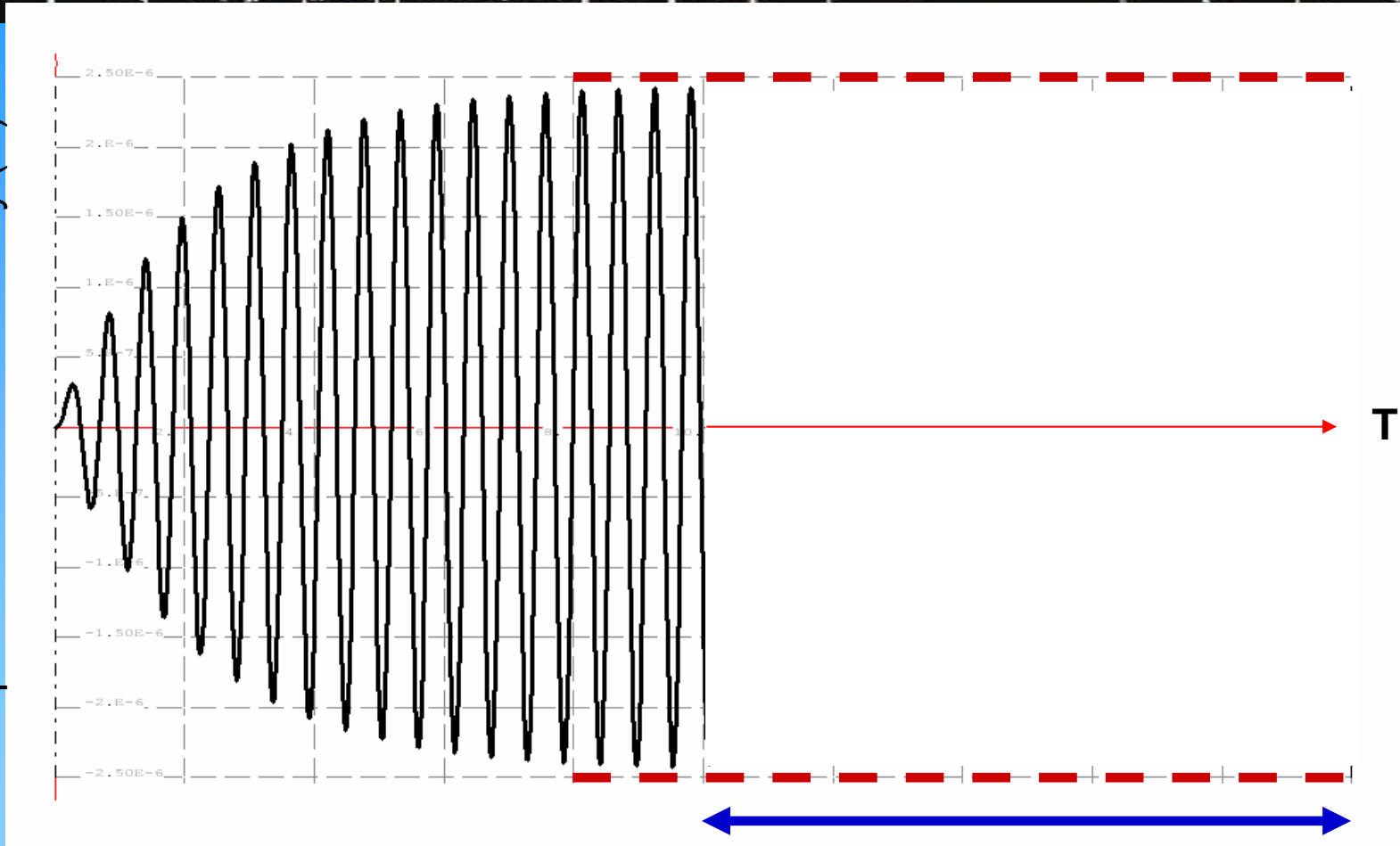
Some acoustic peaks above 100Hz have an amplitude comparable to the low frequency peaks

Second configuration



Recent development – vibration control –

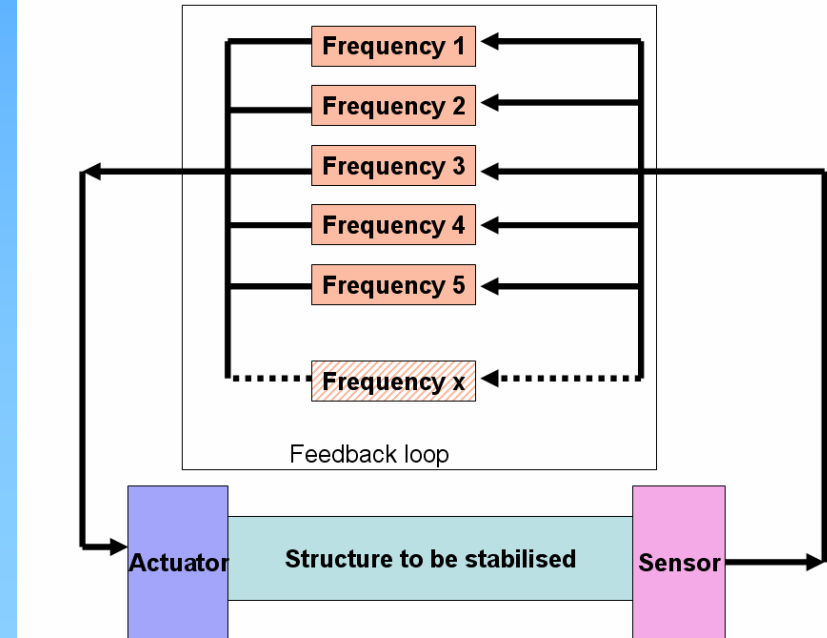
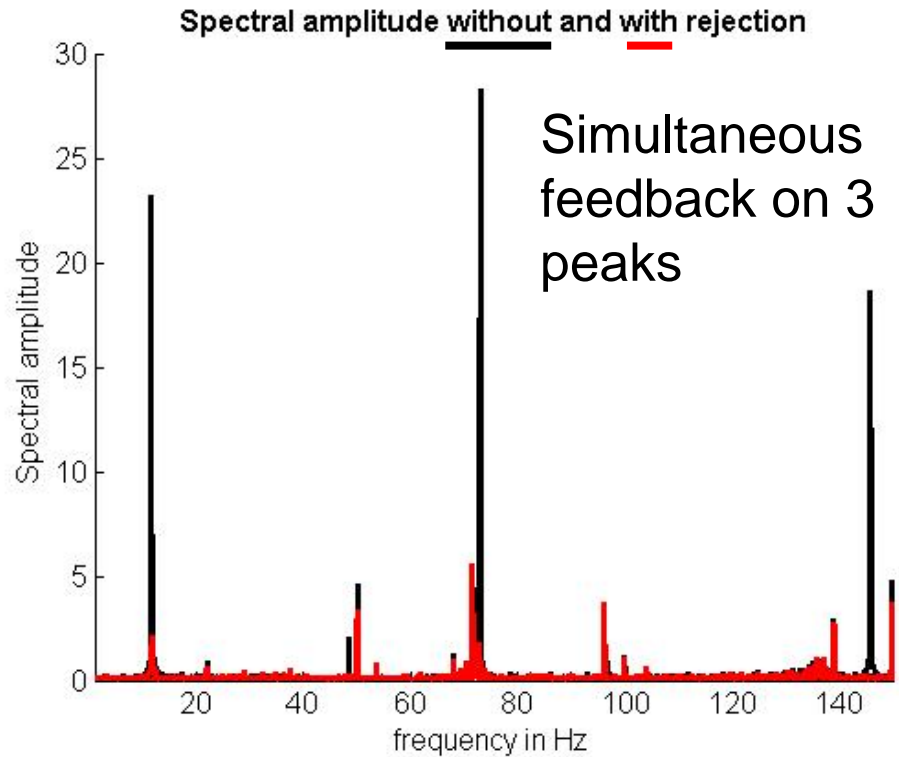
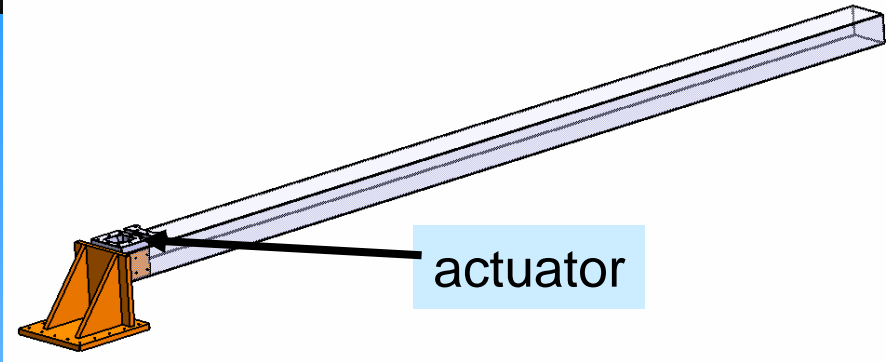
Displacement of the extremity (m)



Feedback ON



Feedback algorithm to reject resonances on a 2,5m long quadrupole prototype



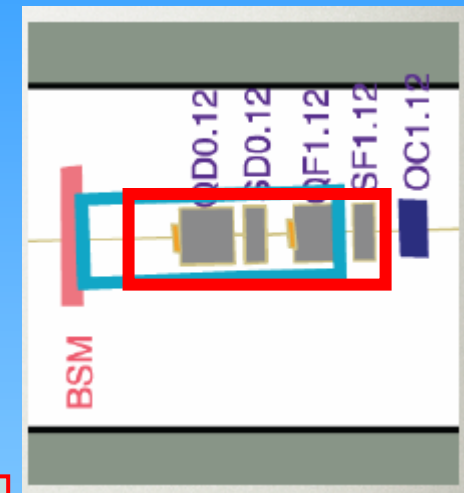
Two solutions possible with ATF2 set-up:

1. Shintake monitor (BSM) on table:

Shintake monitor:	740kg
support:	estimated at 100kg
QD0:	400kg
mover:	estimated 25kg
T-plate:	10kg

=>total Shintake + QD0 without extra BPMs: **1275kg**
not enough capacity to add SD0 etc...

From T.Sanuki U.Tokyo



1. Shintake monitor on separate support:

QD0+mover+T-plate:	estimated at 435kg
SD0+mover+T-plate:	estimated at 181kg
QF1+mover+T-plate:	estimated at 435kg
SF1+mover+T-plate:	estimated at 181kg

=>total QD0+SD0+QF1+SF1 without extra BPMs: **1232kg**
not enough capacity to add OC1