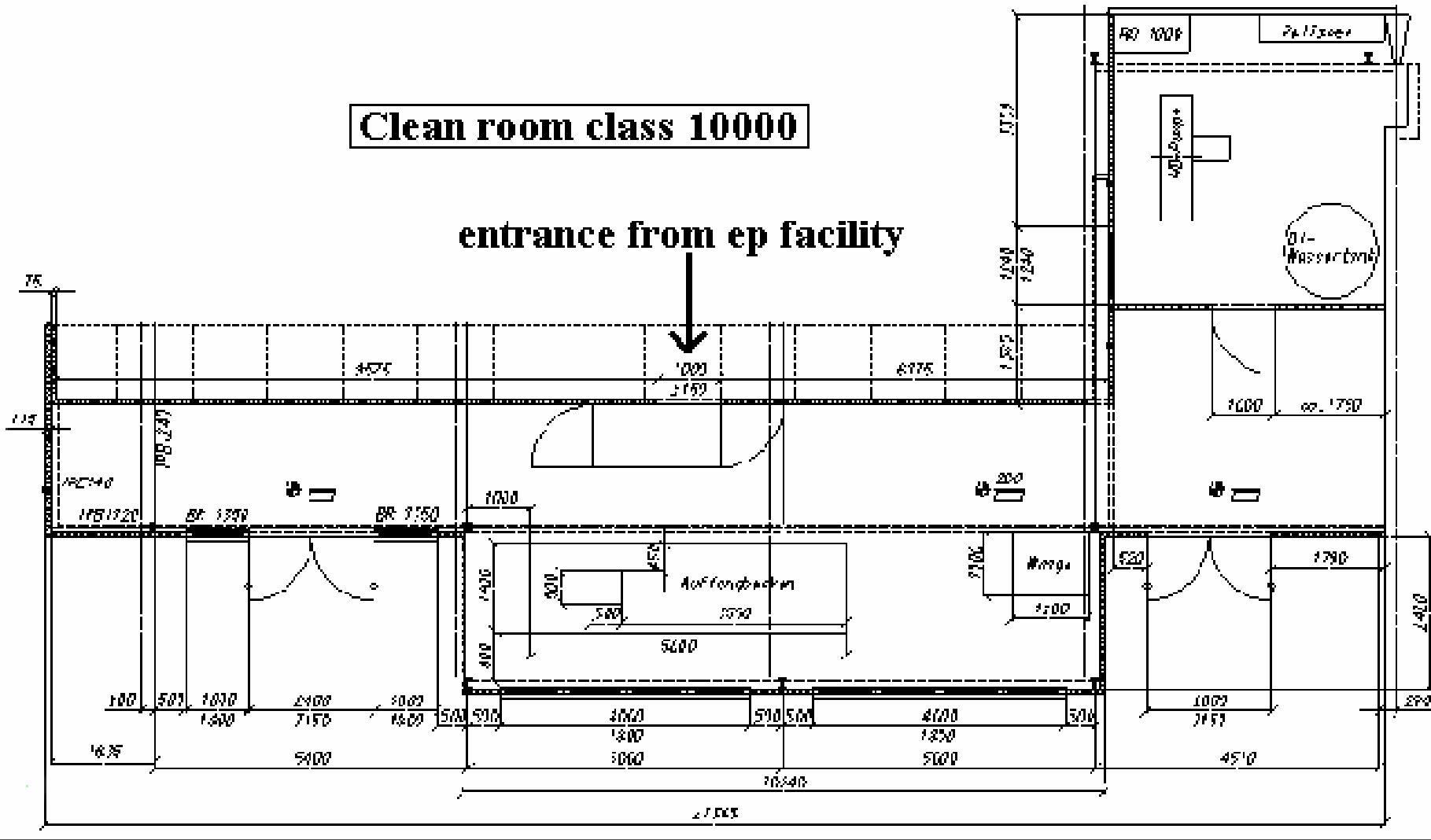


ELECTRO POLISHING FACILITY AT DESY

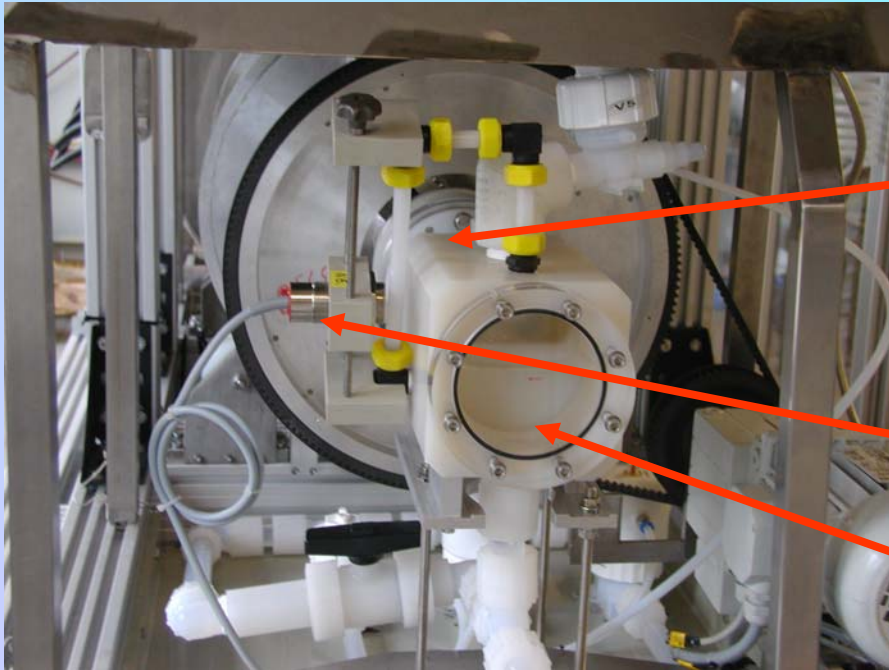
Clean room class 10000

entrance from ep facility



ELECTRO POLISHING HEADS

OLD VERSION

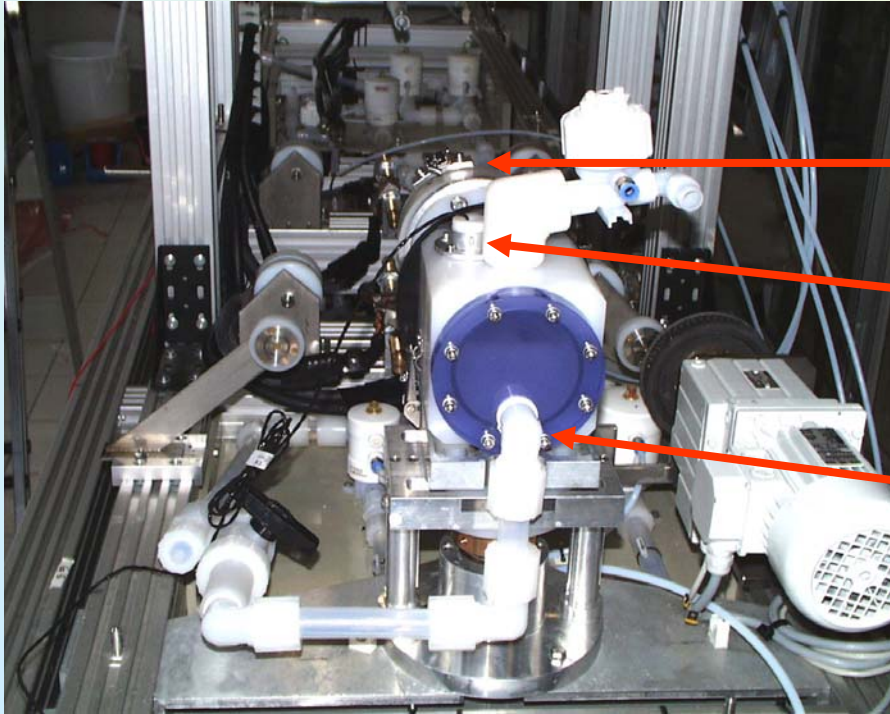


Problems:

- flange system:
difficult assembly /
often origin of leakage
- vulnerable ext. level sensors
- Remaining residues of acid
during drain and rinse

ELECTRO POLISHING HEADS

NEW VERSION



Solutions:

quick locking mechanism

vertical level sensors

Drain now at bottom position
during drain and rinse

HEAT EXCHANGER

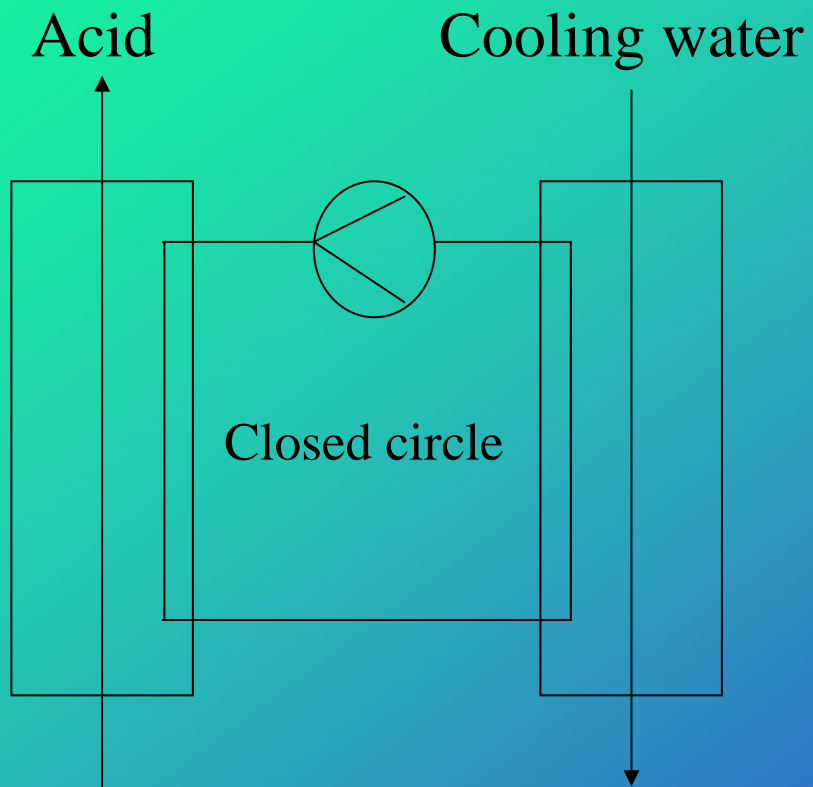
VERSION I



VERSION II



VERSION III



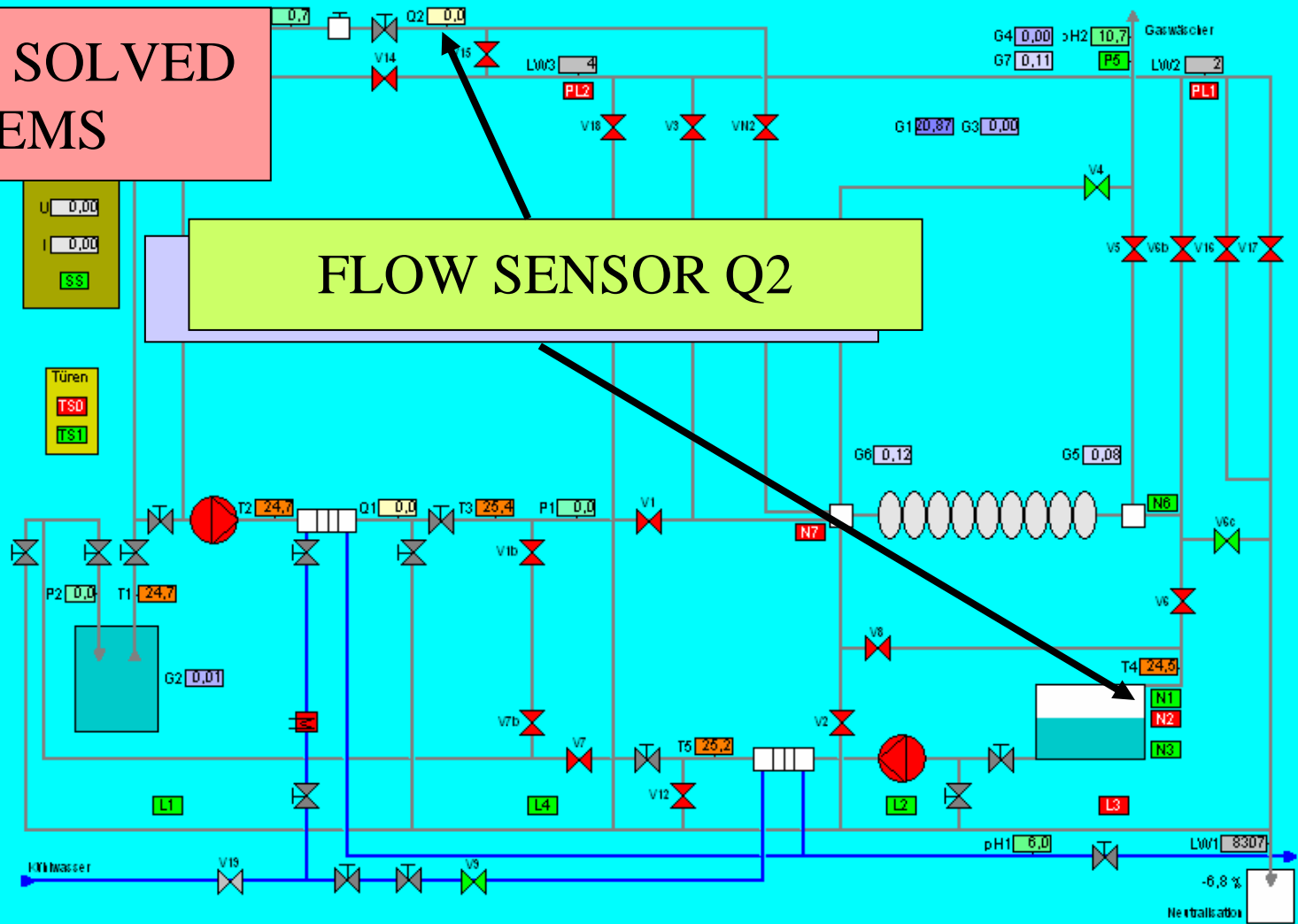
Advantage of the HF absorber opposite the gas scrubber and the lime milk cartridge

- The standard gas scrubber don't reduce HF-gas acceptable
- The lime milk cartridge has a very good absorb rate of HF but a high danger of a blockage of the cartridge
- The pressure fluctuations in the system are reduced with the HF absorber
- The HF absorb rate of HF absorber is good
- The danger of a blockage of the absorber cartridge is clearly smaller
- Changing of the granulates is simple



OTHER SOLVED PROBLEMS

FLOW SENSOR Q2



Meldungsarchiv

Prozesswerte

26.06.03 15:49:4

...	Nummer	Datum	Uhrzeit	Dauer	Art	Meldungstext	Störort	Z
1	16	26.06.03	15:31:10	0 00:00:00	Alarm	Druckausfall (P3)	Spülwasser	ge
2	1	26.06.03	17:59:51	0 00:01:59	Fehler	Diagnosealarm	SPS	gekomme

Other remarks

- Durability of the axial rotary shaft seal is 25 working hours (new PVDF - version in test)
- Problem of cross talking of a frequency converter was solved with a μ -metal housing
- Problem with the supplier of the acid (forbidden changing of the barrel flanges)
- Capacitive sensors are very sensitive to short electric pulses. This problem is solved with a programmed dead time (PLC).