

Introduction

Tomo SANUKI

We have NO building/campus

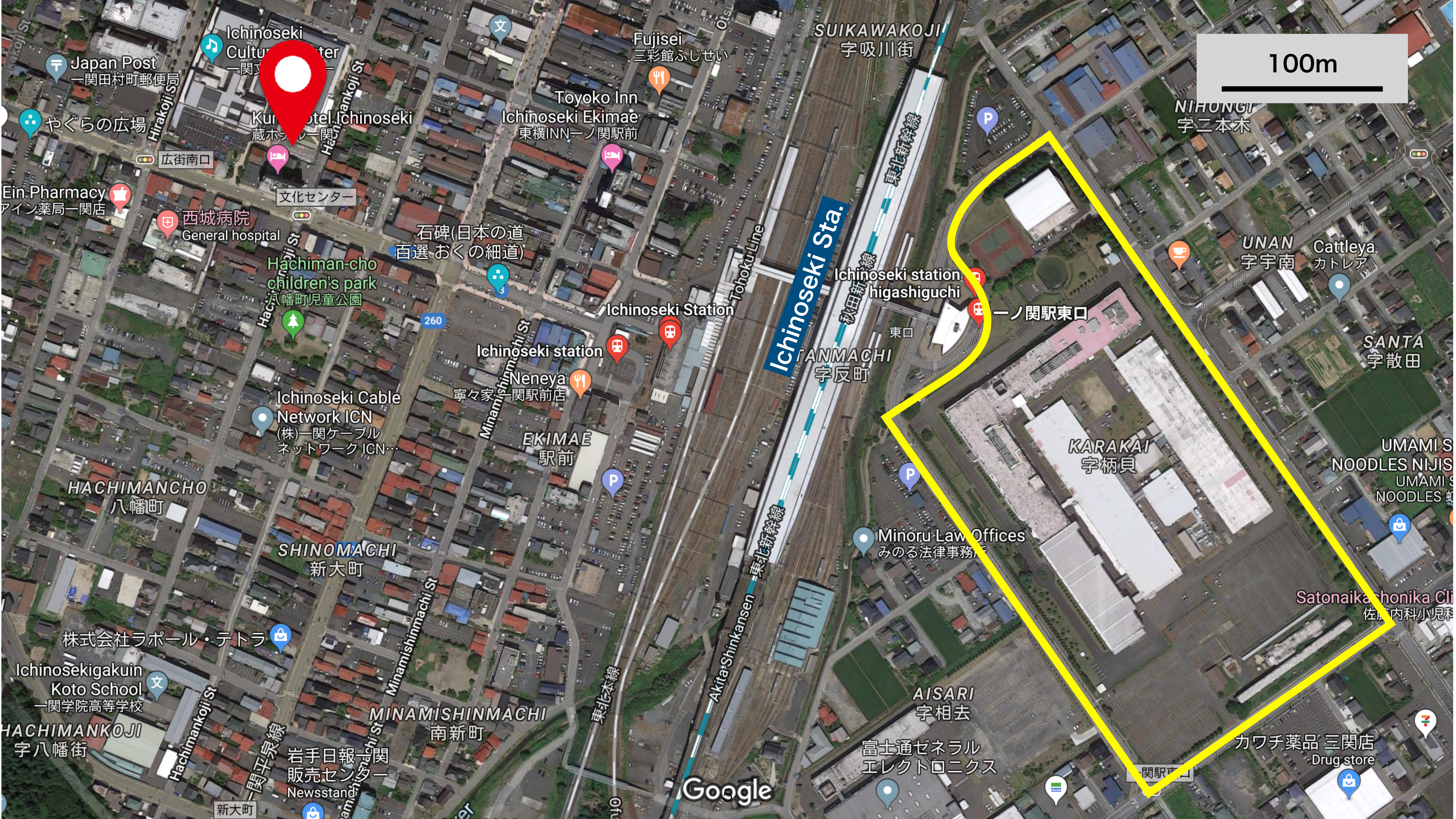
- Land acquisition
- Building construction is often delayed / postponed.
- We don't have a full-featured campus until ???

Without building/campus

- Stock a huge number of parts
- Handle a huge number of parts
- Assemble modules from small parts
- Check electronics
- ...

Need pre-campus ?

- Utilize existing facilities.
 - Tohoku U. ? Iwate U. ?
 - KEK?
- The near, the better ?



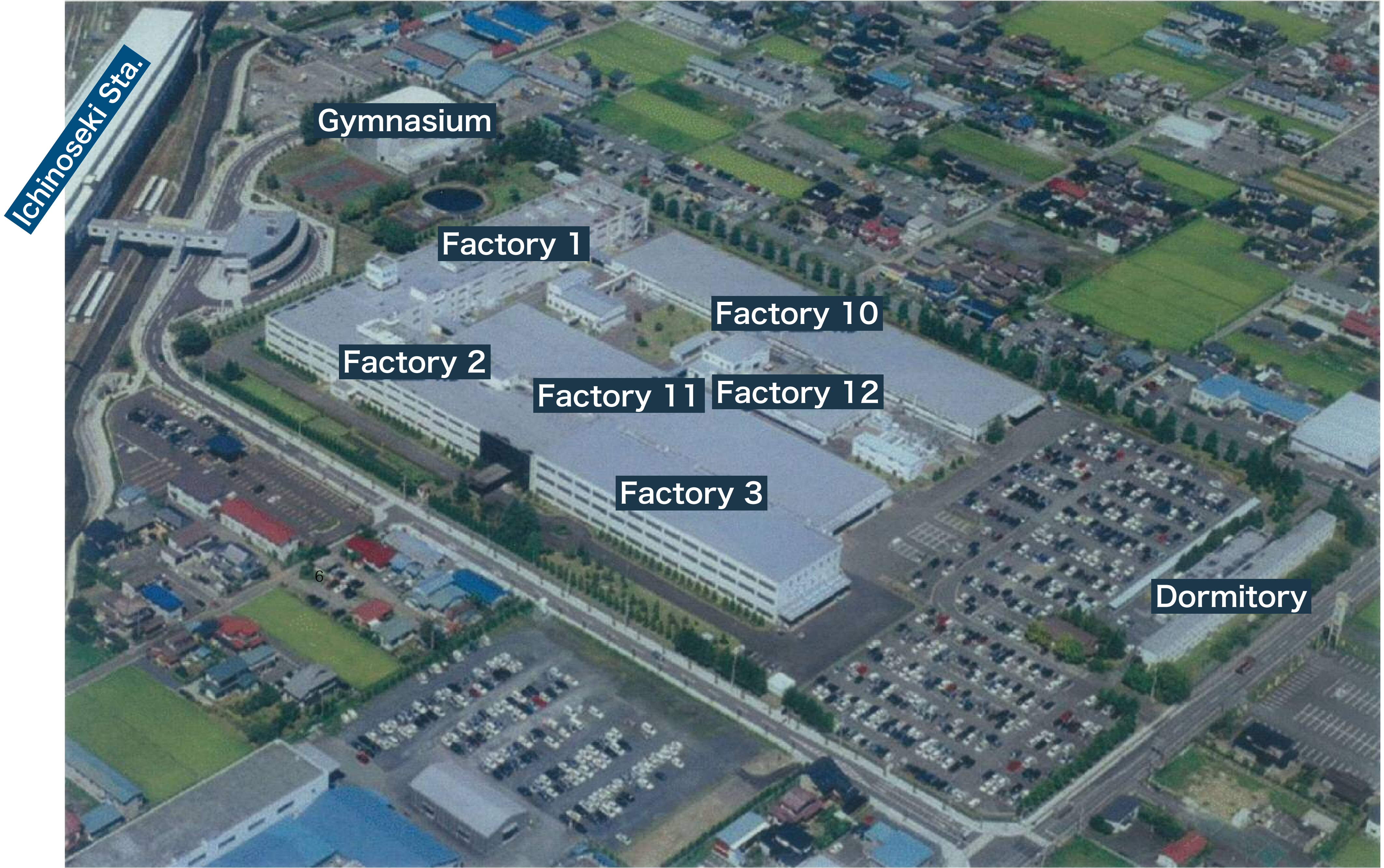
100m



Ichinoseki Sta.

Japan Post 一関田村町郵便局
 やぐらの広場
 Ein Pharmacy アイソ薬局一関店
 西城病院 General hospital
 Hachiman-cho children's park 八幡町児童公園
 Ichinoseki Cable Network ICN (株)一関ケーブルネットワークICN...
 HACHIMANCHO 八幡町
 SHINOMACHI 新大町
 株式会社ラポール・テトラ
 Ichinosekigakuin Koto School 一関学院高等学校
 HACHIMANKOJI 字八幡街
 岩手日報一関販売センター Newsstand
 Ichinoseki Culture Center 一関文化センター
 Kurumai Hotel Ichinoseki 蔵木ホテル一関
 文化センター
 石碑(日本の道百選 おくの細道)
 Ichinoseki station 一ノ関駅前
 NENEYA 寧々家一関駅前店
 EKIMAE 駅前
 Fujisei 三彩館ふじせい
 Toyoko Inn Ichinoseki Ekimae 東横INN一ノ関駅前
 SUIKAWAKOJI 字吸川街
 Ichinoseki station higashiguchi 東口
 一ノ関駅東口
 ANMACHI 字反町
 Minoru Law Offices みのる法律事務所
 AISARI 字相去
 富士通ゼネラルエレクトロニクス
 KARAKAI 字柄貝
 UNAN 字宇南
 Cattleya カトレア
 SANTA 字散田
 UMAMI S NOODLES NIJIS UMAMI S NOODLES 興
 Satonakashonika Clinic 佐藤内科小児科
 カワチ薬品 三関店 Drug store

Google



Ichinoseki Sta.

Gymnasium

Factory 1

Factory 10

Factory 2

Factory 11

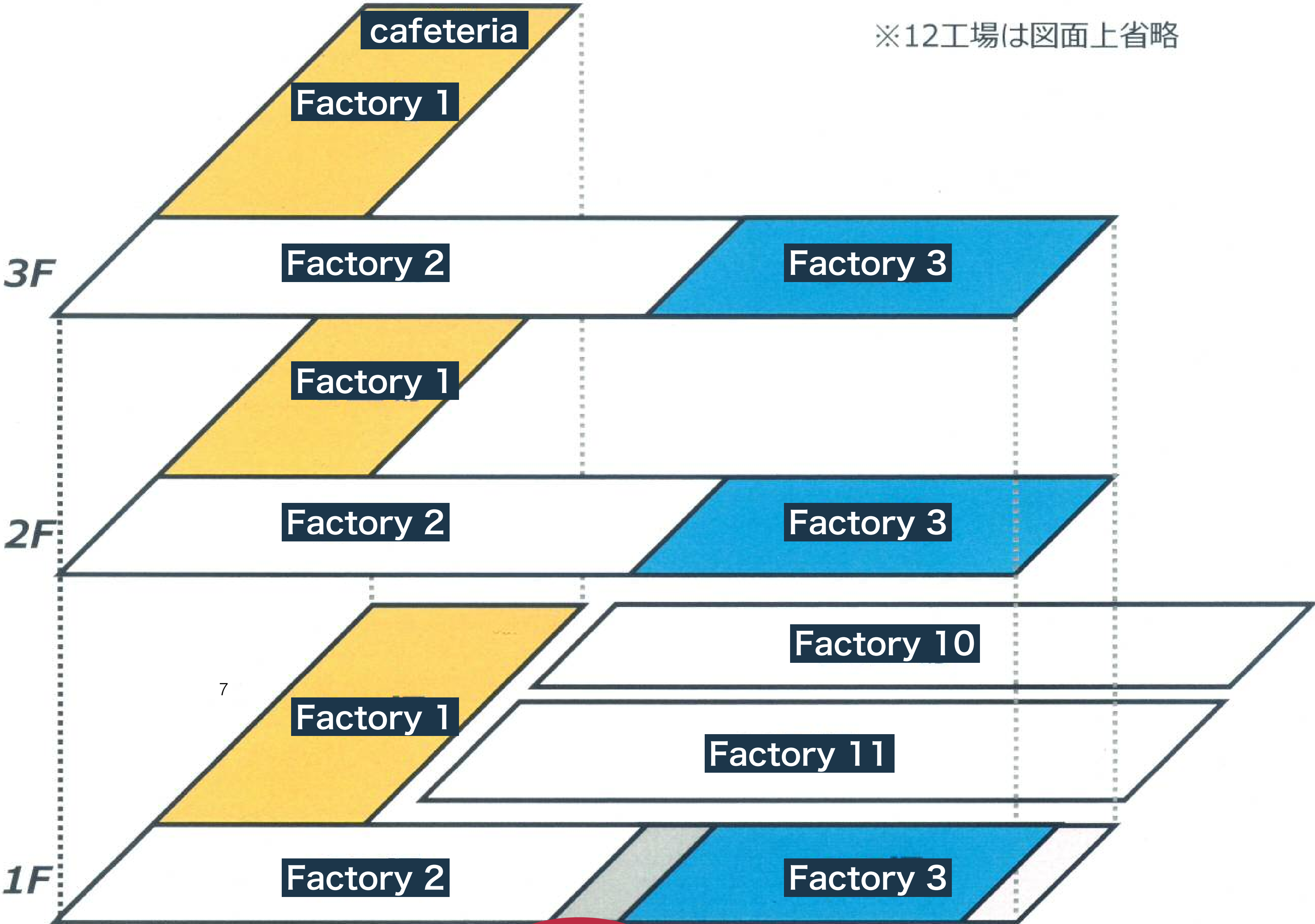
Factory 12

Factory 3

Dormitory

6

※12工場は図面上省略



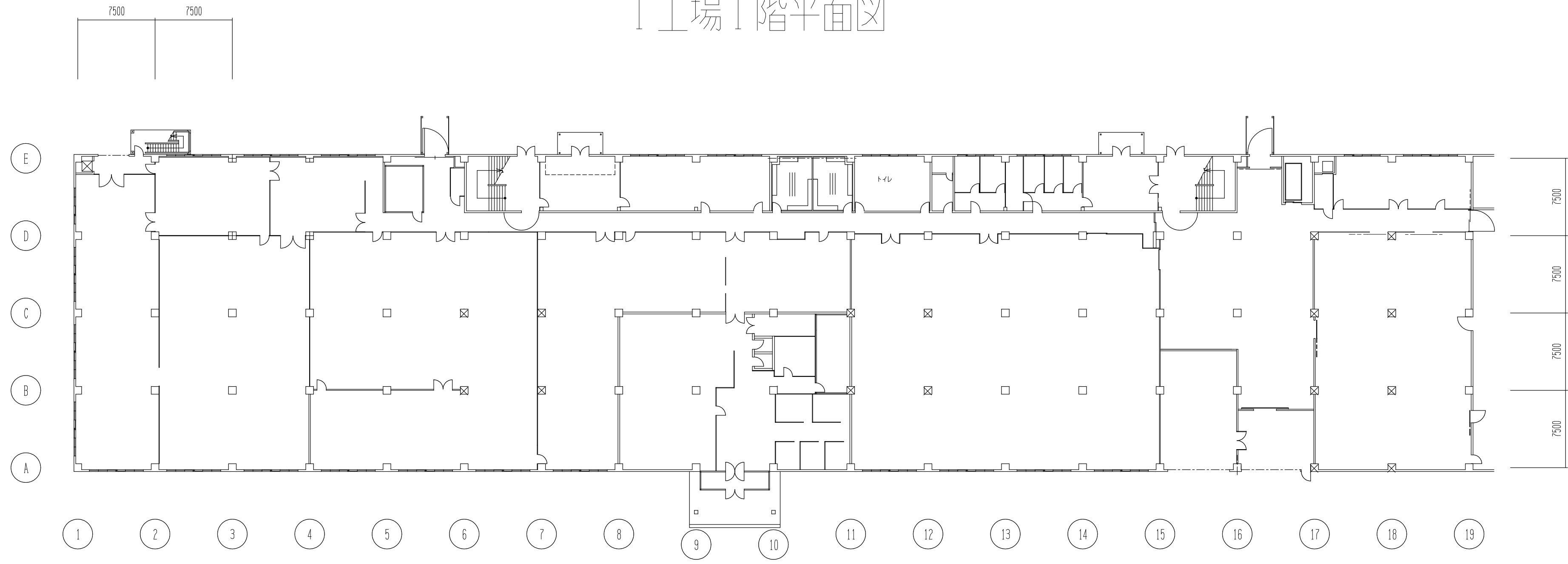
Entrance



Can we use this empty factory as an ILC pre-research building, where early detector construction work could be done ?

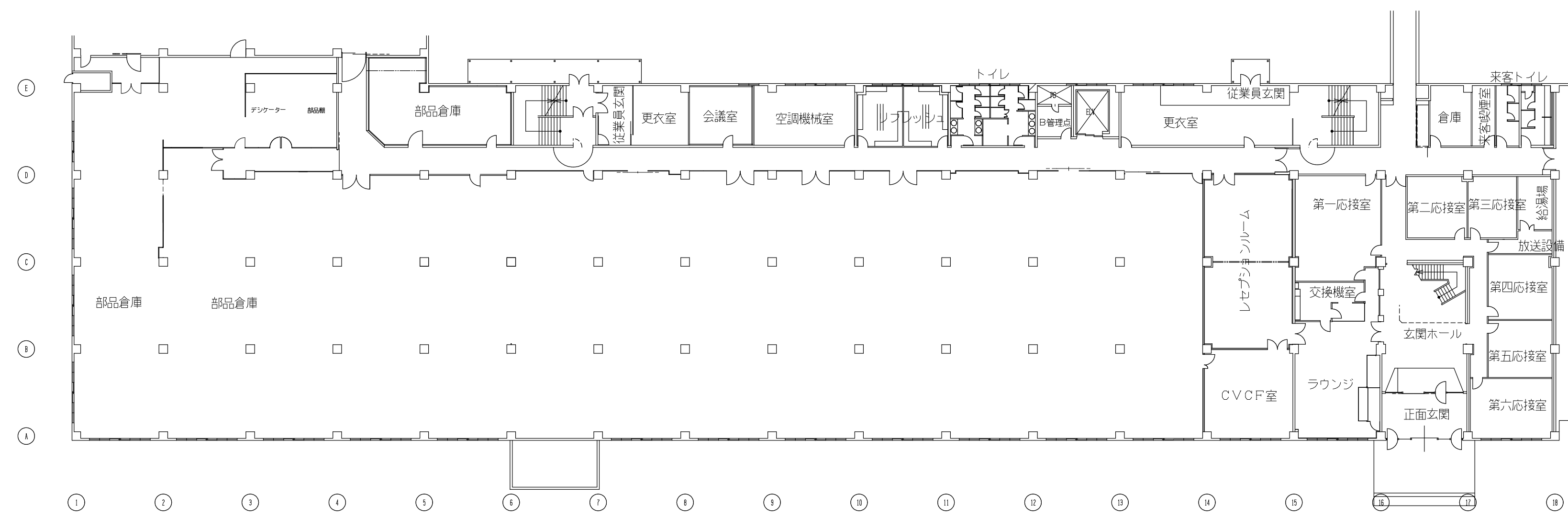
Tour

1工場1階平面図



| | | | | | | | | | | | |
|----------|--------------|----|--------|------|------|-----|-------------|------------|-------------|--------|--|
| REVISION | ▲ | | ▲ | | | NEC | APPROVED BY | CHECKED BY | DESIGNED BY | TITLE | |
| | ▲ | | ▲ | | | | DATE | DATE | DATE | 1工場 1階 | |
| | DESCRIPTIONS | 記事 | DESIGN | DATE | DATE | | SCALE | | | | |
| | | | | | | | A-10-1/20 | | | | |
| | | | | | | | A-20-1/30 | | | | |

2工場1階平面図



| REVISION | NO. | DESCRIPTIONS | 記事 | DESIGN | DATE | DATE | NO. | DESCRIPTIONS | 記事 | DESIGN | DATE | DATE | NO. | DESCRIPTIONS | 記事 | DESIGN | DATE | DATE | NO. |
|----------|-----|--------------|----|--------|------|------|-----|--------------|----|--------|------|------|-----|--------------|----|--------|------|------|-----|
| ▲ | | | | | | | | | | | | | | | | | | | |
| ▲ | | | | | | | | | | | | | | | | | | | |
| ▲ | | | | | | | | | | | | | | | | | | | |
| ▲ | | | | | | | | | | | | | | | | | | | |

| | | | | | |
|------------|------|-------------|--------------------------|-------------|--------|
| NEC | | APPROVED BY | CHECKED BY | DESIGNED BY | TITLE |
| | | | | | 2工場 1階 |
| DATE | DATE | SCALE | A-100-1/20 A-200-1/30 | | |

